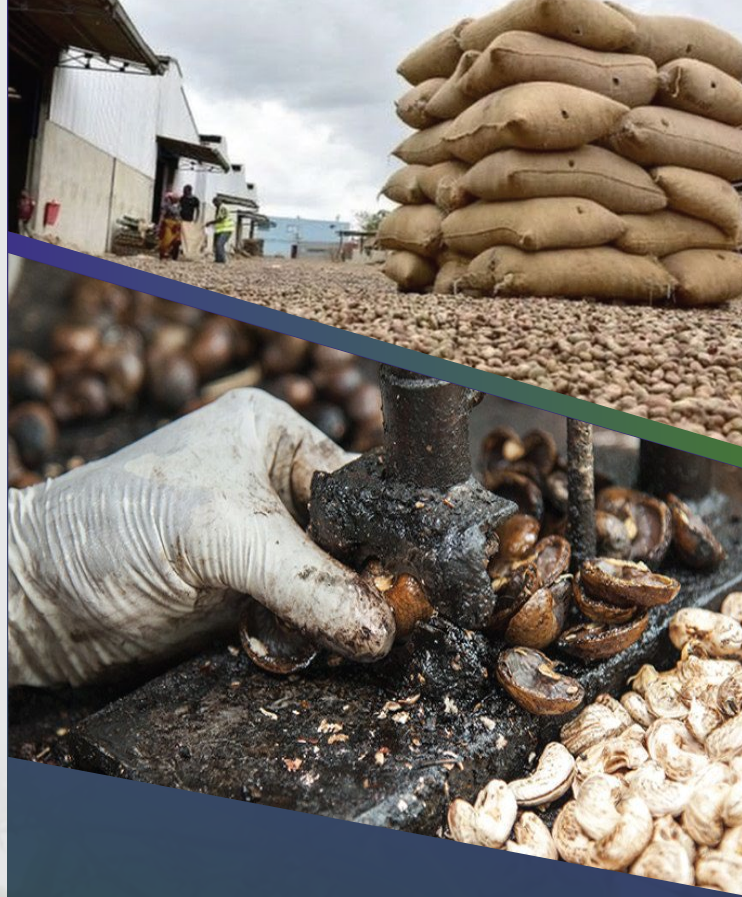


E: FEES AND CHARGES

There are various charges which are incurred by buyers after acquiring the RCN from warehouses, some of charges are as shown in table Na. 1 below:

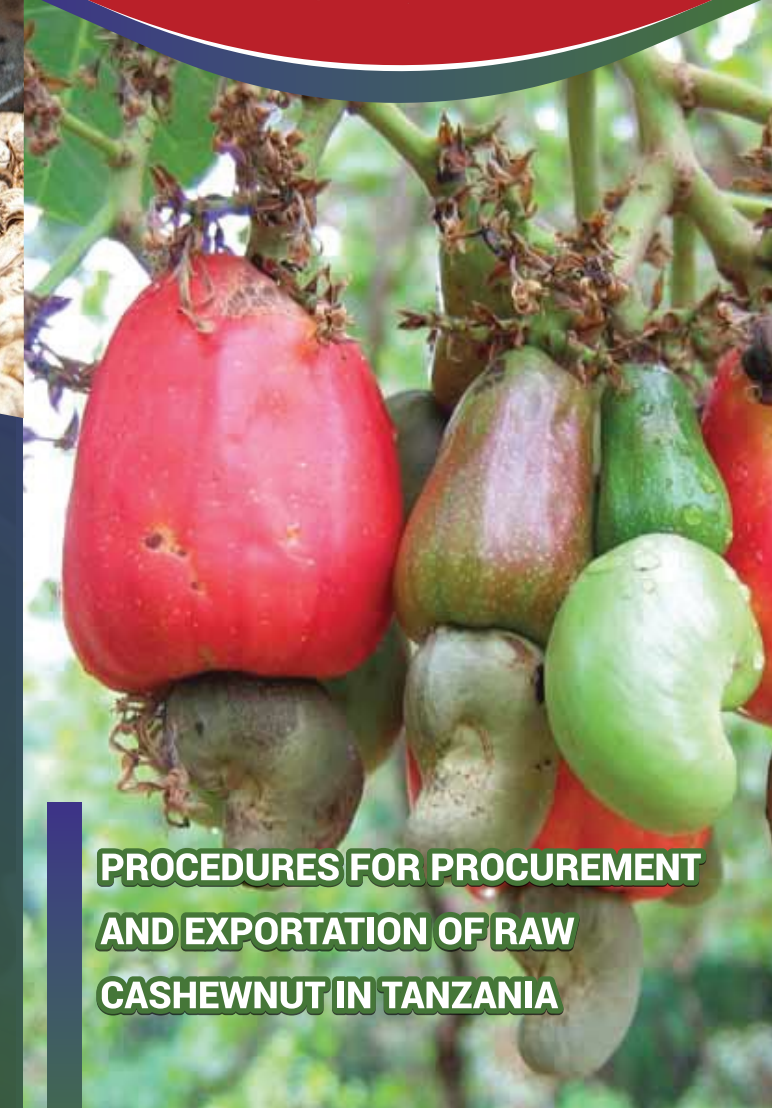
No.	Particular	Organization	Amount (Tshs./USD)
1	Warehouse Operation Charges (Tshs)	Private/WRRB	Tshs.38.00/kg
2	Jute Bags (Subject to changes)	Cooperative Union/TCDC	Tshs. 65.07/kg
3	Cashew inputs contribution (Subject to changes)	Cooperative Union/TCDC	Tshs. 110/Kg
4	Transportation from main warehouse to Port/Warehouse -Mtwara & DSM)	Private	Tshs.50 to 120/kg
5	Loading and Offloading at warehouse	Private	As per negotiation
6	Tanzania Ports Authority (TPA) charges		
(i)	Handling of containers-Full Domestic Containers (20ft and 40ft)	TPA	160 to 360 USD/Container
(ii)	Suffing (Mtwara Port) for 20ft and 40ft container	TPA	70 to 140 USD/Container
(iii)	Storage Charges (The charges applicable after a grace period of 14 days for empty container and 7 days for full container)	TPA	4 to 16 USD (Empty) 20 to 80 USD (Full container)
(iv)	Verified Gross Mass (VGM) Certificate (20Ft & 40Ft)	TPA	60 USD/Container
(v)	Port Wharfage	TPA	0.5% of FOB Price
7	Plant Quarantine and Phytosanitary service	Phytosanitary certificate (Ministry of Agriculture) Treatment Supervision (Ministry of Agriculture) Consignment Inspection (Ministry of Agriculture)	USD 15 per Consignment Min 3 containers Min USD 100 depending on Consignment i. if the consignment is 1 ton or less-USD 2 ii. If more than 1 ton but less than 1000 tons-USD 2 + (No. of tones *USD 0.2) iii. If more than 1000 tons -USD 2 + (No. of tones *USD 0.1)
8	Fumigation - Container	Private	Tshs. 40,000 to 50,000 per container
9	Certificate of Origin	TCCIA	Tshs. 45,000 to 300,000 based on cashew value
10	Atomic Certificate	Tanzania Atomic Energy Commission	0.2% of FOB value
11	Export Levy	Tanzania Revenue Authority	15% of FOB value or USD 160 whichever the higher.
12	Freight charges	Shipping lines-Private	DSM Port: USD 450– 800 per container Mtwara Port: USD 900– 1,300 per container
13	Clearing and forwarding Agency	Private	Tshs. 70,000 to 100,000 per container, also depends on negotiation

NOTE: More information can be obtained from respective organizations.



CASHEWNUT BOARD OF TANZANIA
P. O. Box 533, Mtwara, Tanzania
Tel: (023) 2333303 | Fax (023) 2333536
www.cashew.go.tz

BODI YA KOROSHO TANZANIA



**PROCEDURES FOR PROCUREMENT
AND EXPORTATION OF RAW
CASHEWNUT IN TANZANIA**



A: PROCEDURES FOR PROCUREMENT AND EXPORTATION OF RAW CASHEWNUT IN TANZANIA

1. Registration of the company (if not register with BRELA)
2. Application of buying license by registering online through www.atmis.kilimo.go.tz with the following certified attachments:
 - i. Valid business license,
 - ii. TIN certificate
 - iii. Company's certificate of incorporation / Registration
 - iv. Valid Tax Clearance Certificate (N/A for a new company)
 - v. Two passport size photos (coloured) of company representative
3. All online Registered and verified raw cashewnut buyers are required to deposit bid security to CBT account depending on the quantity intended to be purchased at each auction (Bid security ranges from 20Mil. to purchase 50MT to 100MT, 50Mil. to purchase 101MT to 250MT, 100Mil to purchase 251MT to 500MT, 300Mil to purchase 501MT to 1,000MT, 500Mil to purchase 1001 to 3,000MT and
4. Submission of bid letter for auctioning to the respective Cooperative Unions which are scheduled in five days of the week (Wednesday to Sunday) based on respective cooperative union timetable.

5. Effecting payments to the respective Cooperative society through their Settlement bank accounts within four (4) working days from auction day.
6. Collecting cashewnuts from auction warehouses to owned/rented warehouses or to the port
7. Application of export permit to the Cashewnut Board of Tanzania
8. Payment of export levy through Tanzania Revenue Authority
9. Payment of Port charges to Tanzania Port Authority
10. Stuffing of cashewnuts to the destination
11. Shipping of cashewnuts to the destination

NB: Cooperatives are allowed to deliver raw cashewnuts at "Free on Board" basis upon receipts of confirmed export orders.

B: RAW CASHEWNUTS SALES CONDITIONS

- i. The sale shall be based on closed bidding
- ii. The licensed buyer will be provided with sales catalogue 12 hours before auction.
- iii. Each buyer shall be expected to put forward his offer for lots required
- iv. The bidding price shall be ex-warehouse.
- v. The sale unit shall be per Kilogram in Tanzania Shillings (TZS).
- vi. The minimum bidding quantity shall be 50 metric tons of raw cashewnuts.

- vii. The sale in lots shall be based on warehouse receipt and lots in each warehouse receipt shall be purchases by one buyer
- viii. Mode of payment shall be in banker's cheque/ TISS to the respective seller's bank accounts and the buyer shall receive the original Warehouse Receipt and Release Warrant from respective Cooperative Union.
- ix. The buyer shall pay for the commodity within 4 working days after purchase, failure to that the respective consignment shall be resold in the next auction.

C: GRADES OF RAW CASHEWNUTS

- i. All raw cashewnuts stored in the warehouse shall be sold in two distinguishable quality grades which are standard grade (Shelling Outturn \geq 48 lbs/80 Kg bag) and under grade (Shelling Outturn $< 48 \geq$ 44 lbs/80 kg bag).
- ii. Moisture content shall not exceed 10%
- iii. Nut count per one kilogram shall range from 180 to 200

D: BASIC CERTIFICATES FOR EXPORTATION OF CASHEWNUT

- i. Certificate of origin: Issued by TCCIA
- ii. Phytosanitary certificate: Issued by the Ministry of Agriculture (Plant Health Services)
- iii. Fumigation certificates: Issued by registered company
- iv. Weight certificate: Issued by SGS
- v. Radiation certificate: Issued by Tanzania Atomic Energy Commission